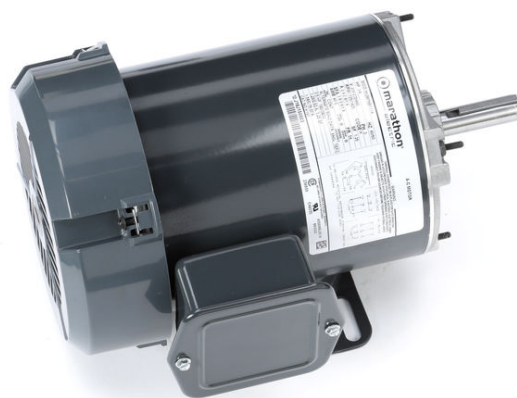


PRODUCT INFORMATION PACKET

Model No: 5K36PNB111

Catalog No: K161

3/4 HP General Purpose Motor, 3 phase, 1800 RPM, 208-230/460 V, 56 Frame, TEFC
Three Phase TEFC Motors





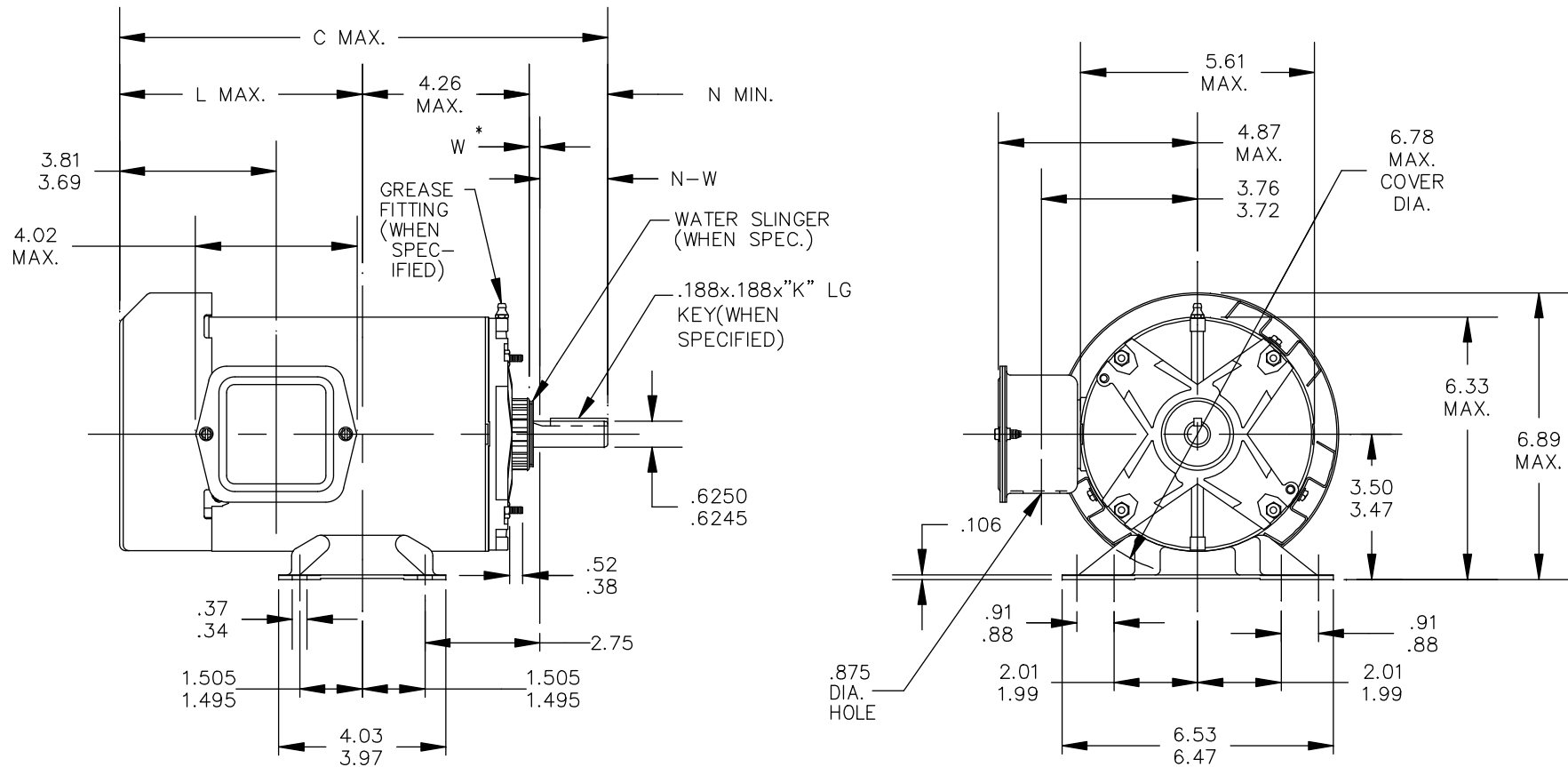
Nameplate Specifications

Output HP	0.75 Hp	Output KW	0.56 kW
Frequency	60 Hz	Voltage	208-230/460 V
Current	2.8-2.8,1.4 A	Speed	1725 rpm
Service Factor	1.25	Phase	3
Efficiency	77 %	Power Factor	0
Duty	Continuous	Insulation Class	B
Design Code	B	KVA Code	K
Frame	56	Enclosure	Totally Enclosed Fan Cooled
Thermal Protection	N/R	Ambient Temperature	40 °C
Drive End Bearing Size	6203	Opp Drive End Bearing Size	6203
UL	Recognized	CSA	Yes
CE	N		

Technical Specifications


Electrical Type	Three Phase	Starting Method	N/R
Poles	4	Rotation	Counterclockwise/Clockwise
Mounting	Rigid Base	Motor Orientation	ANY
Drive End Bearing	BALL	Opp Drive End Bearing	Ball
Frame Material	Rolled Steel	Overall Length	11.36 in
Frame Length	6.22 in	Shaft Diameter	0.630 in
Shaft Extension	1.88 in		
Connection Drawing	113A930FIG2	Outline Drawing	52A111202P1

This is an uncontrolled document once printed or downloaded and is subject to change without notice. Date Created:03/11/2020



W * IS A CLEARANCE DUE TO VARIATION IN PARTS AND ASSEMBLY

1	K	KH	36	56	11.36	1.38	5.18	1.88	2.01/1.79	6.22
P	TYPE	RBC SIZE	NEMA FR.	C	K	L	N	N-W	SHELL LGTH.	

				TOLERANCES UNLESS SPECIFIED		 REGAL-BELOIT CORPORATION		DRAWN D.S 07/29/02		
				DEC.	INCHES			CHK		
				.X	±.1	TITLE		APPD D.S 07/29/02		
				.XX	±.03			SCALE 3=8		
2	CLAMP BOLT EXTN DIM. UPDATED PER ECO - 0031371	UD 07/18/13	PVK	.XXX	±.005	OUTLINE TOTALLY ENCLOSED OUTBOARD FAN		REF		
1	CHG TO RBC FORMAT PER ISO5-1777	SD 04/27/06		.XXXX	±.0005			MAT'L.		FMF
NO.	REVISION	BY & DATE	CHK	ANG	±1/2'	FINISH		PREV		
THIS DRAWING IN DESIGN AND DETAIL IS OUR PROPERTY AND MUST NOT BE USED EXCEPT IN CONNECTION WITH OUR WORK ALL RIGHTS OF DESIGN AND INVENTION ARE RESERVED THIS IS AN ELECTRONICALLY GENERATED DOCUMENT - DO NOT SCALE THIS PRINT				RFP		CAD FILE 52A111202		SIZE	DRAWING NO.	REV.
				DIST				A	52A111202	2

This document is the property of REGAL-BELOIT CORPORATION ("RBC") including its subsidiaries and divisions and contains proprietary information of RBC. This document is loaned on the express condition that neither the recipient nor any other person shall be permitted to disclose or disseminate the information contained herein and that the recipient shall be held responsible for the return of this document to RBC upon request. This document shall be restricted to RBC upon its receipt control laws and regulations.

REV.	DESCRIPTION	DATE	APPROVED
1	CHG TO RBC FORMAT PER IS05-1777	06/15/06	MADHU
2	RENAMED 113A930-FIG-2 TO 113A930FIG2 PER IS07-0972	05/08/07	MADHU

THIRD ANGLE PROJECTION

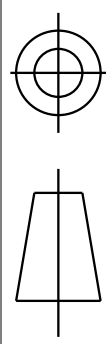
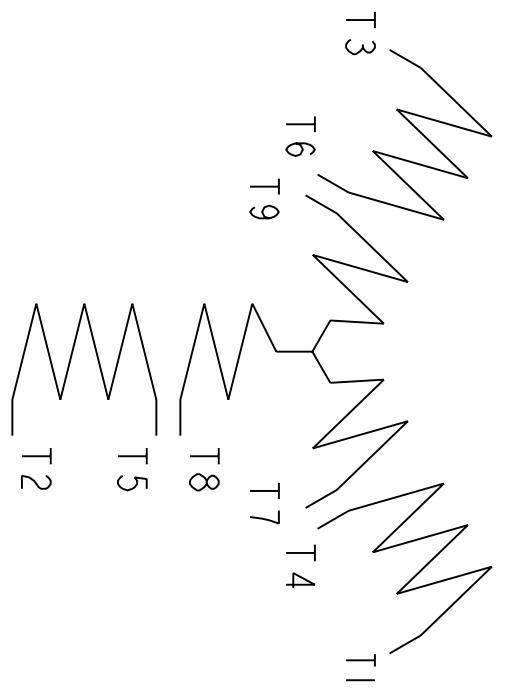


FIG. 2

3 PHASE



	VOLTS	L1	L2	L3	TOGETHER
2Y	LOW	1-7	2-8	3-9	4-5-6
1Y	HIGH	1	2	3	4-7, 5-8, 6-9

BRAKE MOTORS : CONNECT BRAKE LEADS B1 & B2 TO MOTOR LEADS T7 & T8.

FOR ADDITIONAL INFO REFER TO:		SIGNATURES		DATE
APPLIED PRACTICES	MODEL	M.D. PAPE		02/23/03
DIMENSIONS ARE IN INCHES				
TOLERANCE ON:				
1 PL DECIMALS ± 0.1				
2 PL DECIMALS ± 0.02				
3 PL DECIMALS ± 0.005				
ANGLES ± 1.0				
FRACTIONS ±				
FINISH	QUALITY	M.D. PAPE		02/23/03
MATERIAL	ISSUED			
SOLID MODEL: 113A930F162				



REGAL-BELOIT CORPORATION

TITLE CONNECTION DIAGRAM

SIZE	DRAWING	SCALE: 1.000	REF. No:	SHEET 1 of 1
A				
113A930FIG2				REV 2